

Worcester City Art Gallery and Museum

Access Statement



Introduction

Worcester City Art Gallery and Museum is housed in a Grade II-listed Victorian building.

Museums Worcestershire is committed to widening access and providing for the needs of all its visitors. We are constantly seeking to improve the quality and accessibility of the building and welcome feedback from our visitors.

Prior to arrival

The Art Gallery and Museum can be contacted using the following methods:

Phone: 01905 25371

Email: gallerymuseum@worcestershire.gov.uk

Post: Worcester City Art Gallery and Museum, Foregate Street,
Worcester, WR1 1DT

The **website** is museumsworcestershire.org.uk.

We are committed to providing a website that is accessible regardless of technology or ability. Our website access statement provides more information and can be found at <http://www.museumsworcestershire.org.uk/accessibility-statement>.

Getting to us

Worcester City Art Gallery and Museum is in Worcester city centre, approximately 141 metres from Foregate Street Station.

For rail enquiries please contact [08457 484950](tel:08457484950) or visit nationalrail.co.uk.

Worcester bus station is 0.3 miles from the Art Gallery and Museum. For local bus information please phone [0345 646 0707](tel:03456460707) or plan a journey at firstbus.co.uk/worcestershire.

The nearest Shopmobility scheme is in Worcester. Please call [01905 25371](tel:0190525371) or visit shopmobilityuk.org/centres/view/worcester.

Taxi firms with wheelchair-accessible taxis operating in the local area are:

Central: 01905 22292

Associated Blue Star: 01905 610022

Cathedral Cars: 01905 767400

Crown Radio: 01905 357788

Car parking

The Art Gallery and Museum does not offer on-site parking; however, nearby car parks include:

- [Pitchcroft Car Park](#), Castle Street, Worcester, WR1 6EJ
- [NCP Multi-storey Car Park](#), College Street, Worcester, WR1 2LU
- More car parks and information can be found at worcester.gov.uk/parking/parking-sites

[Blue Badge holders](#) can park on the road, opposite the Art Gallery and Museum.

Your visit

The Art Gallery and Museum can be accessed by stairs at the front entrance on Foregate Street or lift at the side entrance on Taylor's Lane.

The lift entrance is at pavement level on Taylor's Lane and services all floors. The lift is fully enclosed, with a sliding door measuring 80cm wide. The fixed horizontal handrail on the left as you walk into the lift is 92cm high and the push button controls are at a maximum height of 101cm. The lift doors on each landing are automatic and

slide open to the left. The lift system has an emergency alarm and hearing loop.

Guide and assistance dogs are welcome.



Ground Floor - entrance and shop

The front entrance on the ground floor can be accessed from the pavement level by lift on Taylor's Lane, or from Foregate Street by steps.

There are seven steps from the pavement to the main entrance. They measure 336cm wide, with a tread of 15cm and depth of 32cm. The handrail is 84cm high.

The floor surface is mosaic tiles and level throughout. Inside the front entrance doors are two thin mats. They are non-slip.

The entrance and shop are uniformly lit with large ceiling lights and low energy flood lights.

The shop counter is 99cm high.

The chip and pin terminal is situated on the shop counter, near the till point. The lead is flexible to allow movement.

Display shelves are at a variety of heights from ground level upwards.



Price labels are printed, unfortunately not in large print, but staff are able to assist with any price enquiries, as well as move and carry items for customers.

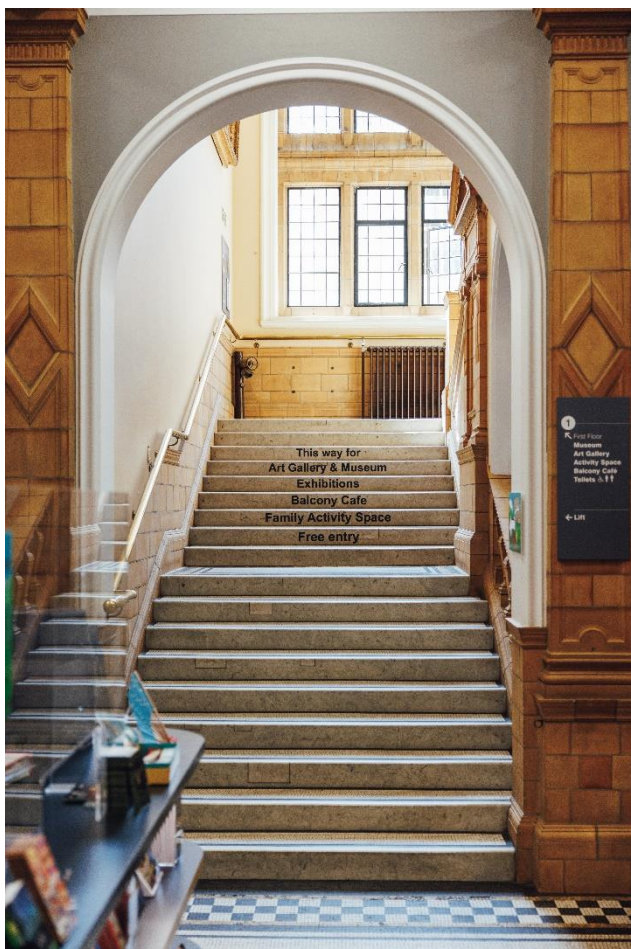
First Floor

The first floor contains the Art Gallery, Museum Galleries, Activity Space, Worcestershire Soldier Galleries, Little Al's at the Balcony café, and toilets.

It can be accessed by the lift or via the staircase.

The stairs are 226cm wide; each tread is 13.5cm high and 29.5cm deep, with a banister height of 98 – 104cm. The surface of the stairs and balcony area are mosaic floor tiles and this then changes to either carpet or linoleum as you move through the Art Gallery and Museum.

All routes throughout out the building are kept clear and free of obstacles and fire exits are clearly signposted.



The Art Gallery

The art gallery is situated to the right as you come out of the lift, and right off the balcony. There is always a member of staff in the art gallery who can assist with any enquiries.

The reception desk is 90cm at its highest and 80cm at its lowest.

The art gallery is fitted with a hearing loop.

Seating varies with each exhibition, but ranges from a two-seater leather sofa to wooden chairs with arms or upholstered benches without arms.

Lighting can vary with different exhibitions depending upon the nature and vulnerability of the exhibits on display. Generally the gallery is lit with an LED wall wash and/or LED spot lights.

A copy of the gallery labels in large print is available at the art gallery reception desk.

First floor: Worcestershire Soldier exhibition

There is usually a member of staff in the museum who can assist with any enquiries.

Exhibits are displayed in cases with glass fronts 46cm from the floor to 210cm and are viewable from a wheelchair.

There are four medal cases with pull-out drawers. The glass display at the top measures 94cm from the floor, and may be difficult to view from a wheelchair. However, the drawers are more accessible, the lowest measuring 15cm from the floor.

There are large interpretation panels throughout and two audio units fitted with hearing loops.

First floor: museum

There are two museum galleries and an activity space, often used for family activities.

The display cases vary in height and style. The objects in most of the cases are viewable from wheelchair height; however there is one sloping desk case where access may be difficult. The case measures 81cm from the floor at the front and 108cm at the back.

There are large interpretation panels and labels are printed black on white in a clear font such as Arial, Verdana or Calibri, with a minimum 16-point text.



First floor: toilets

Toilets are located next to the art gallery and lift. Doors are clearly signposted with text and pictorial signs. There are separate male and female toilets and one unisex accessible toilet with baby changing facilities. There are also baby changing facilities in the female toilets.

The accessible toilet contains a toilet, hand basin and hand dryer. There is adequate room for a wheelchair user to be accompanied. Flooring is linoleum and of a contrasting colour to the walls. Access is via a sliding door, 82cm wide, sliding open to the right. The toilet seat is 47cm high; it is positioned in one corner so that when sitting on the toilet transfer off would be to the user's left. There is one fixed horizontal grab rail to the right of the toilet at 73cm, and one hinged support rail to the left of the toilet, 70cm when lowered. The sink is 69cm from the floor and has a lever operated mixer tap. There is an emergency pull cord with an audible alarm. The room also has two coat hooks and a pull-down baby changing board. The total area in the accessible toilet measures 2.12 x 1.40 metres.

There are two toilet cubicles in the female toilets. One measures 1.5 x 0.81 metres and the other 1.47 x 0.64 metres. Toilet seats are 42cm high. There are also two sinks and a baby changing mat.

The cubicle in the male toilets measures 1.27 x 0.60 metres, with the toilet seat 42cm high. There are two urinals measuring 62cm from the floor and two sinks.

First floor: Little Al's at the Balcony Café

The café is located at the top of the staircase or straight on and to the left when exiting the lift at level 1.

The area is uniformly lit by large ceiling lights and large windows let in plenty of natural light.

Tables are movable, measuring 76cm high with one central leg support. The café chairs have no arm rests.

Café staff are happy to help with any menu enquiries and can provide information about ingredients for those with food allergies.

The café provides table service.



Opening hours

Opening hours for the Art Gallery and Museum:

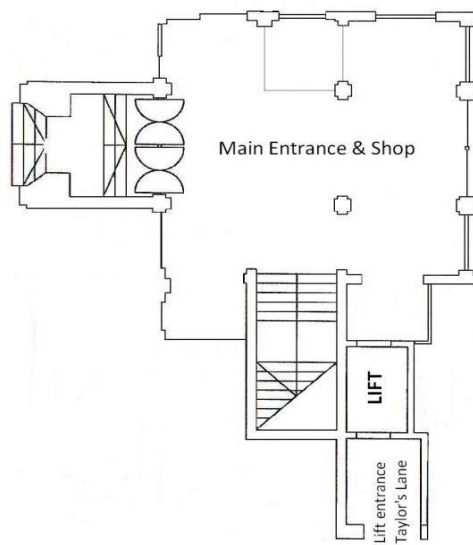
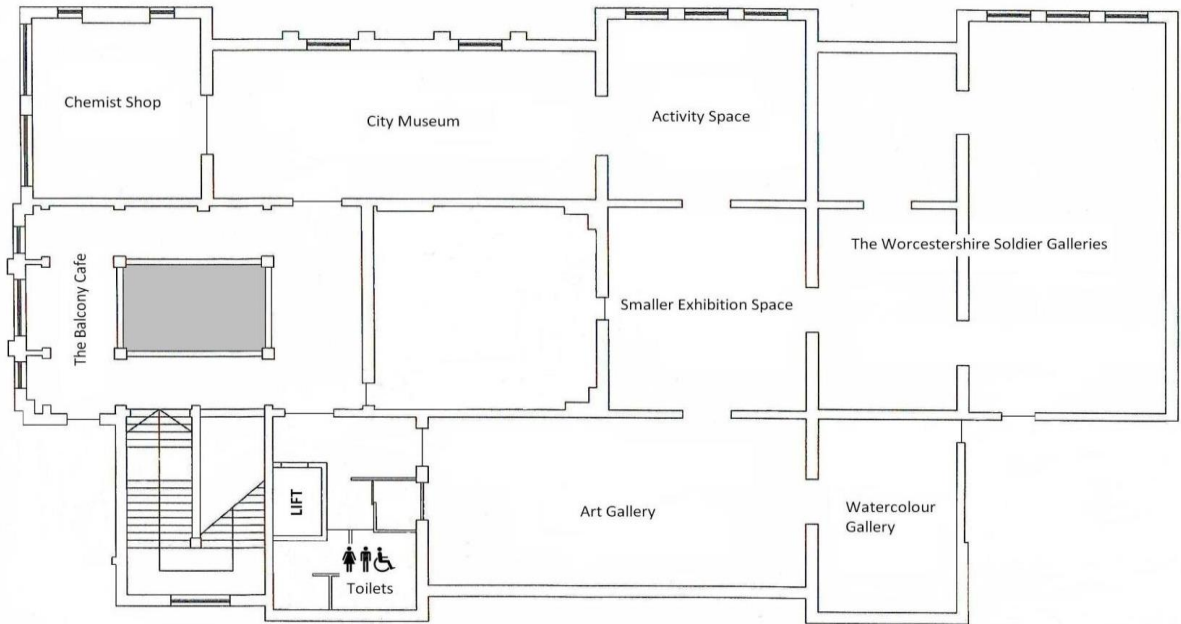
	Open	Close
Tuesday to Saturday	10am	4pm
Sunday	10am	3pm
Bank Holidays	Closed	Closed

Opening hours for Little Al's at the Balcony Café:

	Open	Close
Tuesday to Saturday	10am	3pm
Sunday	10am	2pm
Bank Holidays	Closed	Closed

Floor Plans

Ground floor



First floor