

Worcester City Art Gallery & Museum 2024



**Dame Laura Knight
Dinosaurs on our Doorstep
The Worcester Story**

Welcome to 2024 at Worcester City Art Gallery & Museum

New opening hours mean you can now visit on a Sunday! From 1st January the Art Gallery & Museum is open Tuesday – Saturday 10am – 4pm and Sunday 10am – 3pm (closed Mondays).



This year an impressive collection of works by **Dame Laura Knight** will celebrate her life and connections to Worcestershire. **Atchin Tan: Travelling Through Art** delves into the museum collections as well as showcasing some brand-new commissions, and **Dinosaurs on our Doorstep** promises to be roarsome fun for all the family. Later in the year we unveil **The Worcester Story**, a brand-new museum gallery filled with your favourite objects telling the story of our city.

For a full list of what's on at the Art Gallery & Museum please visit www.museumsworcestershire.org.uk where you'll find visitor information to help plan your visit.

For groups and school visits information please also see the website or email gallerymuseum@museumsworcestershire.org.uk



Your visit

Enjoy **free entry** to the Art Gallery & Museum, donations welcome (there is a charge for some temporary exhibitions) Open Tuesday - Saturday 10am - 4pm, Sunday 10am - 3pm

Enjoy tasty treats from Little Al's Kitchen at the Balcony Café



Visit the Museum Shop for greetings cards, souvenirs of your visit and special gifts to treasure

The Art Gallery & Museum is fully accessible, please see www.museumsworcestershire.org.uk for our access statement. If you would like this leaflet in large print please email gallerymuseum@museumsworcestershire.org.uk

 **Worcester City Museum and Art Gallery**

 **@worcestermuseum**

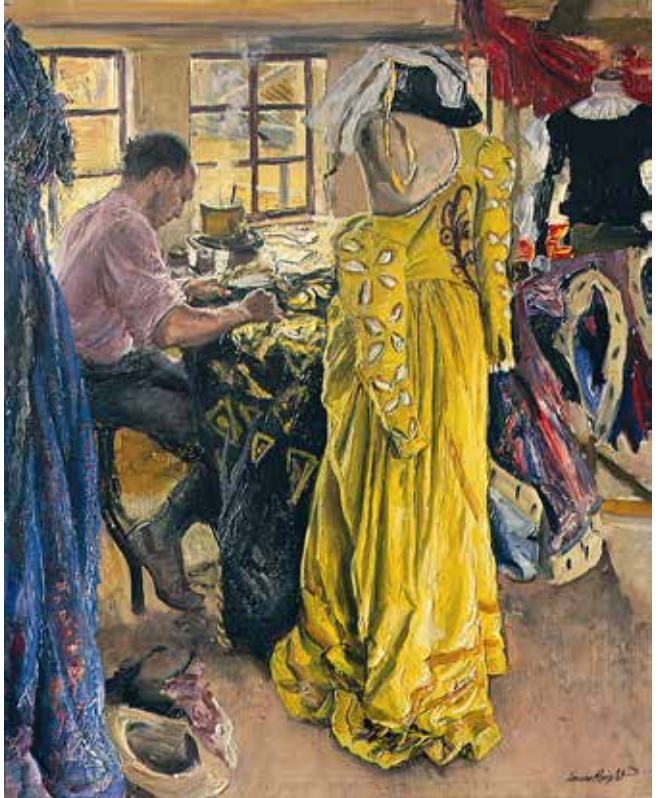
 **museumsworcestershire**

Dame Laura Knight – I Paint Today

13th January – 30th June

Dame Laura Knight was the first female artist welcomed into the Royal Academy. Her love of Worcestershire and the Malvern Hills inspired her art throughout the later years of her life. This exhibition features a stirring selection of Knight's work and focuses on key events, characters and achievements which helped to shape her life and career, telling the story of a woman who grew out of the Victorian era and developed and adapted her craft through a period of tumultuous change.

This is a paid exhibition, to book tickets please go to www.museumsworcestershire.org.uk



The Yellow Dress © Estate of Dame Laura Knight.
All rights reserved 2023 / Bridgeman Images

Art Gallery & Museum Members go free

Become a Member of Worcester City Art Gallery & Museum

If you would like to support the Art Gallery & Museum and its amazing collections whilst enjoying unique Member benefits including free tickets to paid exhibitions, please download an application form from www.museumsworcestershire.org.uk or pick up a leaflet next time you visit.



Spotlight exhibitions



Image courtesy of Emma-Mai Tilling

Aotearoa - Māori Myths and Legends of New Zealand

27th January – 9th June

Exploring their land, the natural environment and the colonial impact on the Māori people. Discover objects from the World Cultures Collection on display for the first time and learn about the vibrant, resilient culture of the Māori.

Harry Adams - Walks Through Worcestershire

15th June – 3rd November

Born in Worcester in 1868 Harry Adams worked as a decorative artist in the Royal Worcester Porcelain Factory and studied at the Worcester School of Art, before leaving to study in Paris and travel in Switzerland. Adams' favourite subjects were mountains and hills and he loved working outdoors, especially in the Teme valley. We are delighted to present this collection of his wonderful, large landscapes and celebrate one of the city's finest artists.



Winter Sunshine, 1903, Harry William Adams (1868 – 1947) © Worcester City Collection



Market Day, 1907, William Frank Calderon © Worcester City Collection

Connections - The Worcester City Collection, in conversation with the community

14th September – 20th October

Featuring artworks selected by community groups from Worcester's own collection, Connections explores people's different

responses to art and the emotions and perspectives it can evoke. On show will be unexpected treasures and old favourites including Clytemnestra and Market Day.



Dinosaurs on our Doorstep!

**13th July –
8th September**

This summer, come face to face with the dinosaurs that used to roam Britain, from harmless herbivores to terrifying tyrannosaurs.

From teeth to tail bones, jaws and claws, food to fossilised poo, and giant skeletons, encounter real fossil bones from 100 million years ago, and find out who ate whom!



Families always welcome

Here for you

Based in the heart of the museum, the **activity space** is a lovely welcoming area for all the family with activities to make your visit special.

The Art Gallery & Museum is **fully accessible** and there are **baby-changing** facilities.

Fabulous **family trails** and **creative activities** help you to explore the collections and exhibitions in a fun way.

Enjoy family events and activities throughout the year, particularly at school holiday times. See www.museumsworcestershire.org.uk and follow us on social media to see what's coming up.

For school visits information please also see the website or email gallerymuseum@museumsworcestershire.org.uk





Landscape with Gipsies, Thomas Gainsborough, 1753-4.
Bequeathed by Mrs Arthur James 1948. Photo: Tate.

Atchin Tan - Travelling Through Art

26th October 2024 - end January 2025

A visual journey through time of Gypsy, Roma and Traveller (GRT) communities, co-curated with members of the communities.

Works by Turner, Munnings and Gainsborough will hang alongside newly commissioned artworks by Romany artists, some of which demonstrate skills from endangered crafts. Hear oral histories, traditional Romany storytelling, poetry and music, and leaf through family photograph albums, while discovering how Romany identity has been portrayed through time.

This exhibition is part of The Vardo Project at Worcestershire County Museum at Hartlebury Castle and has received funding from the John Ellerman Foundation and the Elmley Foundation.



John Ellerman
Foundation



Sunset Seascape, Marion Yeo © the artist

Worcester Society of Artists 76th Annual Exhibition

9th November 2024 - January 2025

Worcester Society of Artists share a passion for appreciating and creating art in an exciting array of different styles. The annual exhibition celebrates and supports local artists and illustrates the wealth of creative talent in Worcestershire.

New in 2024

The Worcester Story

Opens 12th October

This new permanent display shows Worcester's heritage presented in the words of those that know it best; the people who live in the 'Faithful City'. Discover which historic items are meaningful to 21st century residents and what links have been forged with Worcester's long history. See how iconic objects from the museum collections - including its founding natural history collection of the 1800s - resonate with 21st century Worcester.



Images ©Worcester City Collection



Supported using public funding by
**ARTS COUNCIL
ENGLAND**

Always here for you

Don't miss the verdant landscapes by Worcester's most famous artist Benjamin Williams Leader, the huge sturgeon caught in the River Severn and of course Albert the Albatross who arrived in the museum in 1902.



Victorian Chemist Shop

On the first Friday of each month 11am - 3pm the doors to the Victorian Stewards Chemist Shop will be open for you to take a look inside and hear the fascinating story of how it came from Worcester's High Street to the museum.

Visitor information

Open Tuesday – Saturday 10am – 4pm, Sunday 10am – 3pm (closed Mondays).

How to find us

We are three minutes' walk from Foregate Street Station and just five minutes' walk from Worcester High Street and the historic riverside.

Car parking

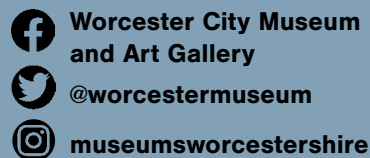
The nearest car park is Pitchcroft Racecourse (just five minutes' walk). Parking for blue badge holders is at The Cross.

**Worcester City
Art Gallery & Museum
Foregate Street
Worcester WR1 1DT**

Tel: **01905 25371**

Email: gallerymuseum@museumsworcestershire.org.uk

For more information on exhibitions, events, talks and tours see www.museumsworcestershire.org.uk



Join our mailing list to receive all the latest news, sign up at www.museumsworcestershire.org.uk

All information correct at time of going to print, December 2023.

If you are visiting to see something in particular, please check the website or call in advance on 01905 25371 for up-to-date information.

