


Worcester City Art Gallery & Museum Access Statement

Introduction

Worcester City Art Gallery and Museum is housed in a Grade II listed Victorian building. It hosts a unique programme of contemporary art exhibitions, as well as housing an historic picture collection, an intriguing selection of objects showcasing Worcester's illustrious past, and the Worcestershire Soldier Museum. The Art Gallery and Museum are committed to widening access and providing for the needs of all its visitors. We are constantly seeking to improve the quality and accessibility of our building and we welcome feedback from our visitors.

Before your visit

You can contact us by any of the following methods

 **Post:** Worcester City Art Gallery & Museum, Foregate Street, Worcester. WR1 1DT



Phone: 01905 25371



Fax: 01905 616979



Email: gallerymuseum@worcestershire.gov.uk

Our website www.museumsworcester.org.uk is a good place to start when planning your visit. It has information about what's on and when. The website is hosted by Worcestershire County Council using a responsive, accessible design suitable for the wide range of browsers and devices available. It is tested by Shaw Trust to ensure compliance with web accessibility standards WCAG 2.0 AA to meet the varying needs of our audience.

Getting to us

Worcester City Art Gallery & Museum is situated 150 metres from Worcester Foregate Street Railway Station.



For information about trains to/from Worcester Foregate Street Station please visit www.nationalrail.co.uk/



For local bus information please visit www.worcestershire.gov.uk/cms/bus/route-finder.aspx or alternatively telephone Traveline on 0871 200 2233.



Taxi firms with wheelchair accessible taxis operating in the area include

A1 Taxis 01905 674934

Associated Bluestar 01905 610022

Cathedral Cars 01905 767400

Central Taxis 01905 674640

Commandey Cars 01905 764940

Worcester TOA Taxis 01905 29999

Car parking

The nearest car parks to the Art Gallery and Museum are in Taylor's Lane (postcode WR1 1DN) and Pitchcroft Race Course (postcode WR1 6EJ). Both car parks are pay and display.

Disabled Badge holders can park opposite the Art Gallery & Museum as for a maximum of 3 hours. Further details of parking for disabled visitors to the City can be found on Worcestershire County Council's website:

www.worcestershire.gov.uk/info/20025/parking/351/disabled_parking_spaces_in_worcester_city_centre

Your visit

The Art Gallery and Museum can be accessed by stairs or lift.

Lift

The lift entrance is at pavement level situated at the side of the building, on Taylor's Lane, and services all floors. The lift is fully enclosed, with a sliding door measuring 80cm wide. The fixed horizontal handrail on the left as you walk into the lift is 92cm high and the push button controls are at a maximum height of 101cm. The lift doors on each landing are automatic and slide open to the left. The lift system features an emergency alarm and hearing loop.

Ground Floor: main entrance and shop area

The main entrance on the ground floor can be accessed from the pavement level by lift on Taylor's Lane, or from Foregate Street by a small number of steps.



- There are seven steps from the pavement to the main entrance. They measure 336cm wide, with a tread of 15cm and depth of 32cm. The handrail is 84cm high.
- The floor surface is mosaic tiles and level throughout and just inside the main doors are two thin mats to minimise dirt levels. They are non-slip.
- The entrance and shop area is uniformly lit with large ceiling lights and low energy flood lights.
- The shop counter is 99cm high.

- The chip and pin terminal is situated on the shop counter, near the till point. The lead is flexible to allow movement higher/lower than the counter.
- Display shelves are at a variety of heights from ground level upwards.
- Price labels are printed, unfortunately not in large print, but staff are very happy to assist with any price enquiries, as well as move and carry items for customers.

First Floor

The first floor contains the Art Gallery, Museum Galleries, Activity Space, Worcestershire Soldier Galleries, Balcony Café and toilets. It can be accessed by the lift or via the main staircase.

- The stairs are 226cm wide; each tread is 13.5cm high and 29.5cm deep, with a banister height of 98 – 104cm. The surface of the stairs and balcony area are mosaic floor tiles and this then changes to either carpet or linoleum as you move through the Art Gallery and Museum galleries.
- All routes throughout out the building are kept clear and free of obstacles and fire exits are clearly signposted.



First floor: Art Gallery

The Art Gallery is situated to the right as you come out of the lift, and right off the balcony. The gallery is manned and staff are happy to help with any enquiries.

- The reception desk is 90cm at its highest, and drops down to 80cm at its lowest.

- The Gallery is fitted with a hearing loop.
- Seating in the galleries varies with each exhibition, but ranges from a two-seater leather sofa to wooden chairs with arms or upholstered benches without arms.
- Lighting can vary with different exhibitions depending upon the nature and vulnerability of the exhibits on display. Generally the gallery is lit with an LED wall wash and/or LED spot lights.
- A copy of the gallery labels in large print is available at the art gallery reception desk.

First floor: Worcestershire Soldier Museum

The Worcestershire Soldier Museum is manned and staff are happy to help with any enquiries.

- The reception desk is 92cm high.
- Exhibits are displayed in cases with glass fronts 46cm from the floor to 210cm and are viewable from wheelchair height.
- There are four medal cases with pull out drawers. The glass display at the top measures 94cm from the floor, and maybe difficult to view from a wheelchair. However, the drawers are easily accessible to all, the lowest measuring 15cm from the floor.
- There are large interpretation panels throughout, as well as two audio units fitted with hearing loops.

There is a wheelchair available from this desk that can be borrowed for the duration of your visit. It can also be pre-booked by calling us on 01905 25371.

First floor: Museum galleries

There are two Museum Galleries, as well as an Activity Space that is well used by our younger visitors and education team.

- The showcases in the museum vary in height and style. The objects in most of the cases are viewable from wheelchair height; however there is one sloping desk case where access may be difficult. The case measures 81cm from the floor at the front and 108cm at the back.
- There are large interpretation panels and labels are printed black on white in a clear font such as Arial, Verdana or Calibri, with a minimum 16 point text.

First floor: WCs

Lavatories are located next to the Art Gallery & lift. Doors are clearly signposted with text and pictorial signs. There is one male, one female with baby changing facilities, and one accessible toilet with baby changing facilities.

- The accessible WC contains a toilet, hand basin and hand dryer. There is adequate room for a wheelchair user to be accompanied. Flooring is linoleum and of a contrasting colour to the walls. Access is via a sliding door, 82cm wide, sliding open to the right. The toilet seat is 47cm high; it is positioned in one corner so that when sitting on the toilet transfer off would be to the user's left. There is one fixed horizontal grab rail to the right of the toilet at 73cm, and one hinged support rail to the left of the toilet, 70cm when lowered. The sink is 69cm from the floor and has a lever operated mixer tap. There is an emergency pull cord with an audible alarm. The WC also has two coat hooks and a pull-down baby changing board. The total area in the disabled WC measures 2.12 x 1.40 metres.
- There are two toilet cubicles in the female WC. One measures 1.5 x 0.81 metres and the other 1.47 x 0.64 metres. Toilet seats are 42cm high. There are also two sinks and a baby changing matt.

- The cubicle in the male WC measures 1.27 x 0.60 metres, with the toilet seat 42cm high. There are two urinals measuring 62cm from the floor and two sinks.

First floor: Café

The Balcony Café, located at the top of the main staircase or straight on and to the left when exiting the lift at level 1, is a lovely place to take a break.

- The area is uniformly lit by large ceiling lights and large windows let in plenty of natural light.
- Tables are movable, measuring 76cm high with one central leg support. The café chairs have no arm rests.
- Café staff are happy to help with any menu enquiries, and can provide information about ingredients for those with food allergies.
- The café provides table service.
- The toilets are easily accessed from the café.

General information

Opening hours:

Art Gallery & Museum	10.30 – 4.30 Monday – Saturday
Shop	10.30 – 4.30 Monday – Saturday
Café	10.30 – 4.15 Monday – Saturday

We are closed on Sundays and bank holidays.

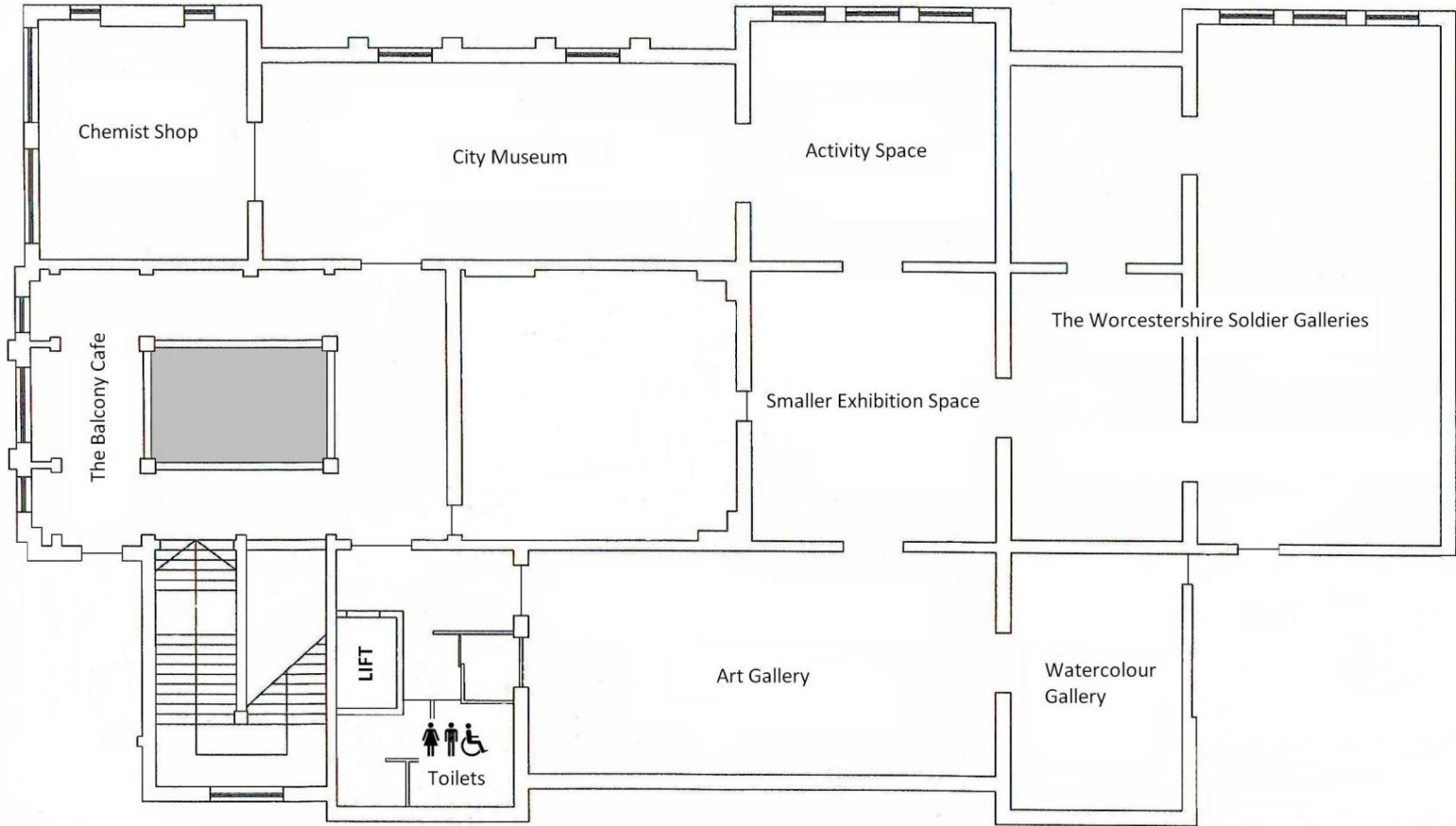
Many of our staff are trained in emergency first aid, and there will be at least one first aider on duty at any time.



Guide and assistance dogs are welcome.

Floor Plans

First Floor



Ground Floor

